

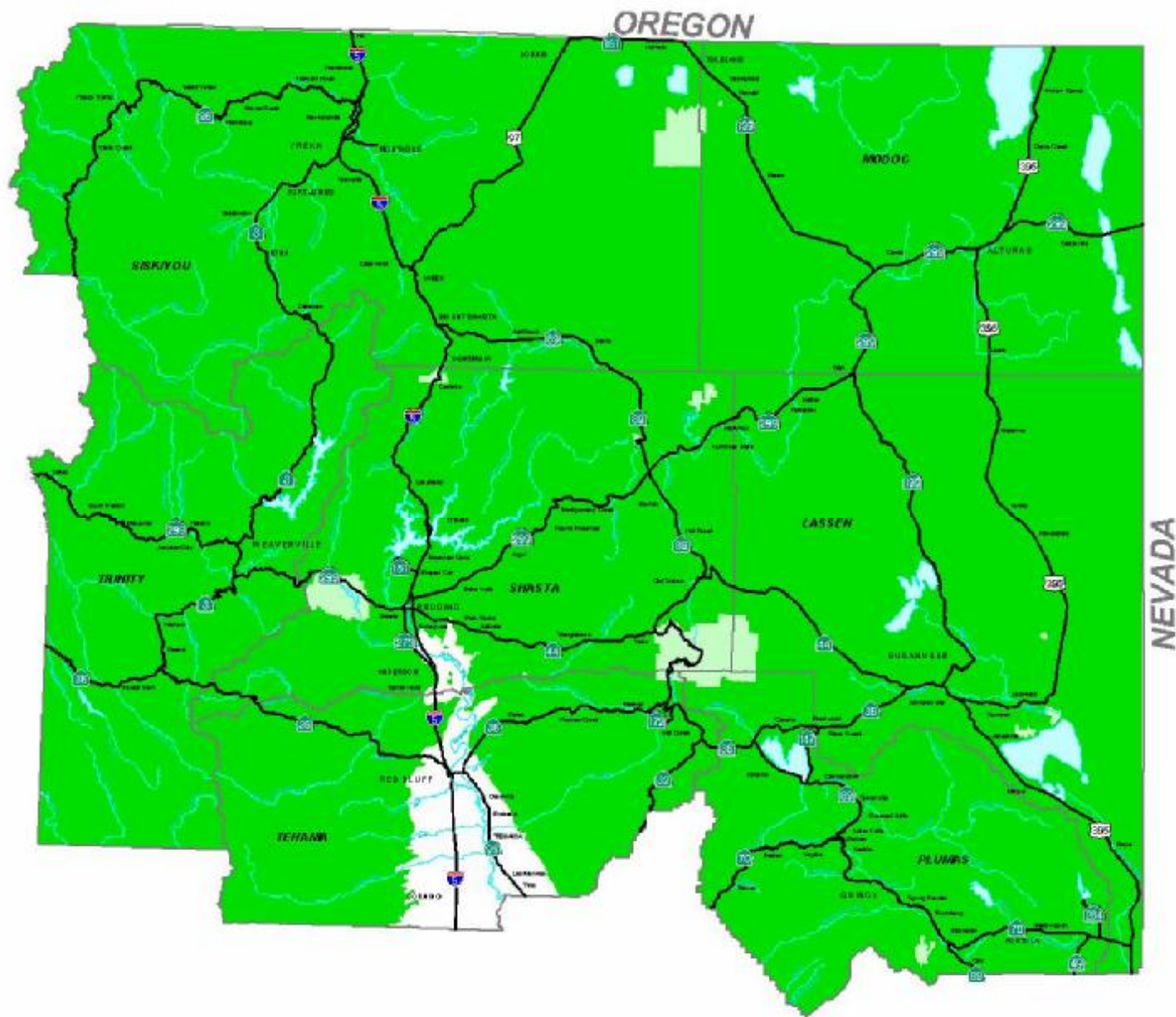


The Challenge...

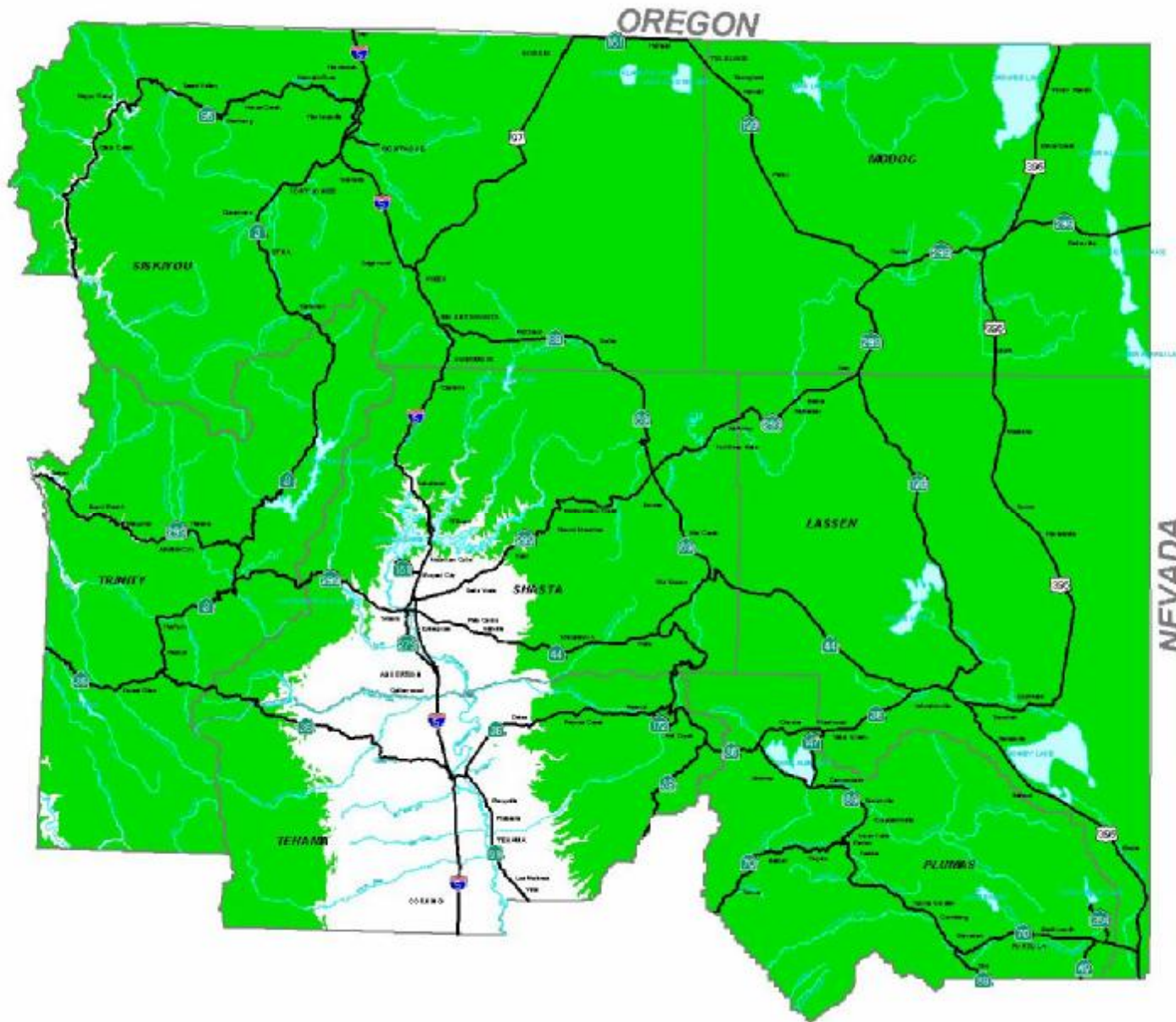
SNOW



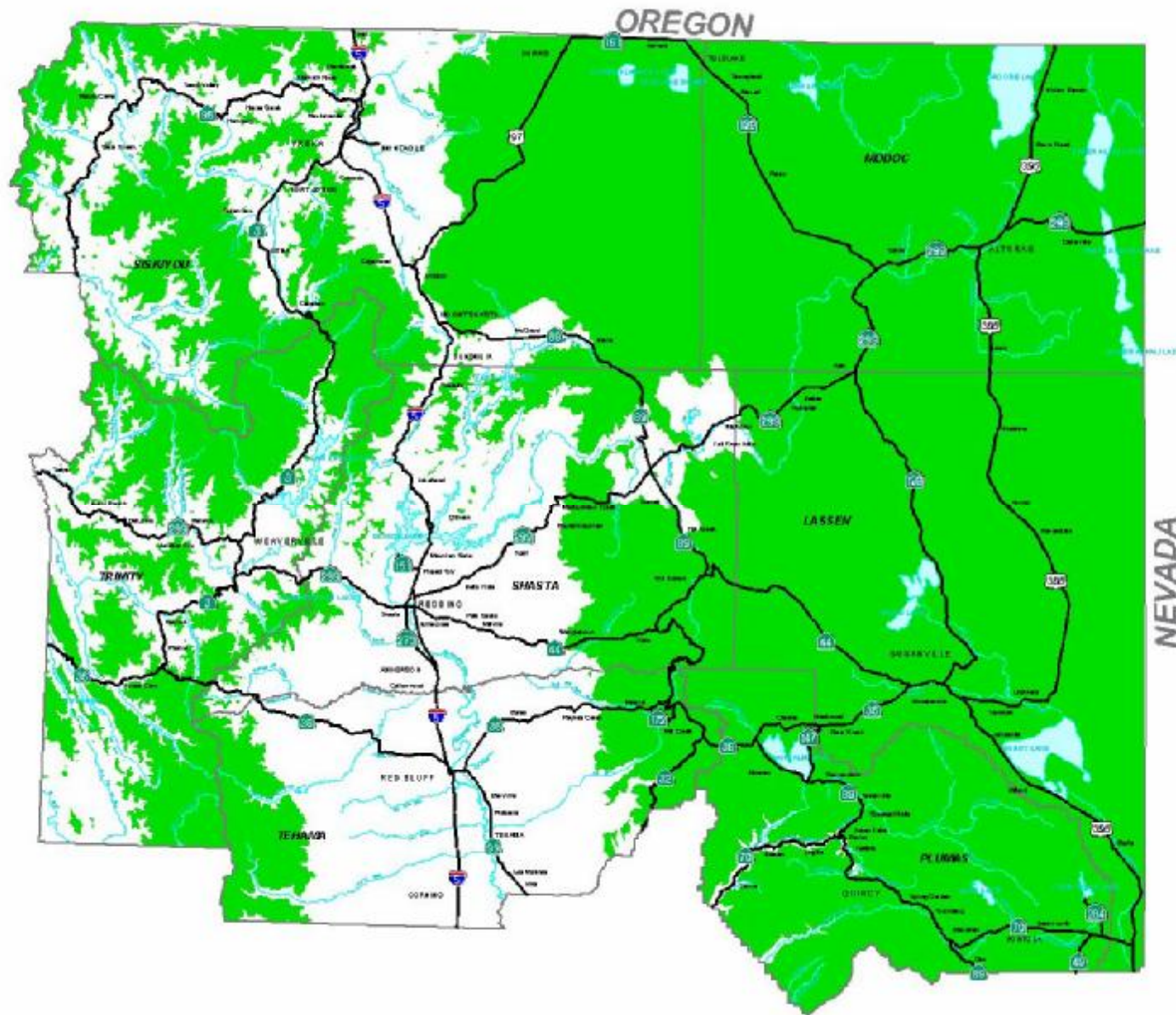




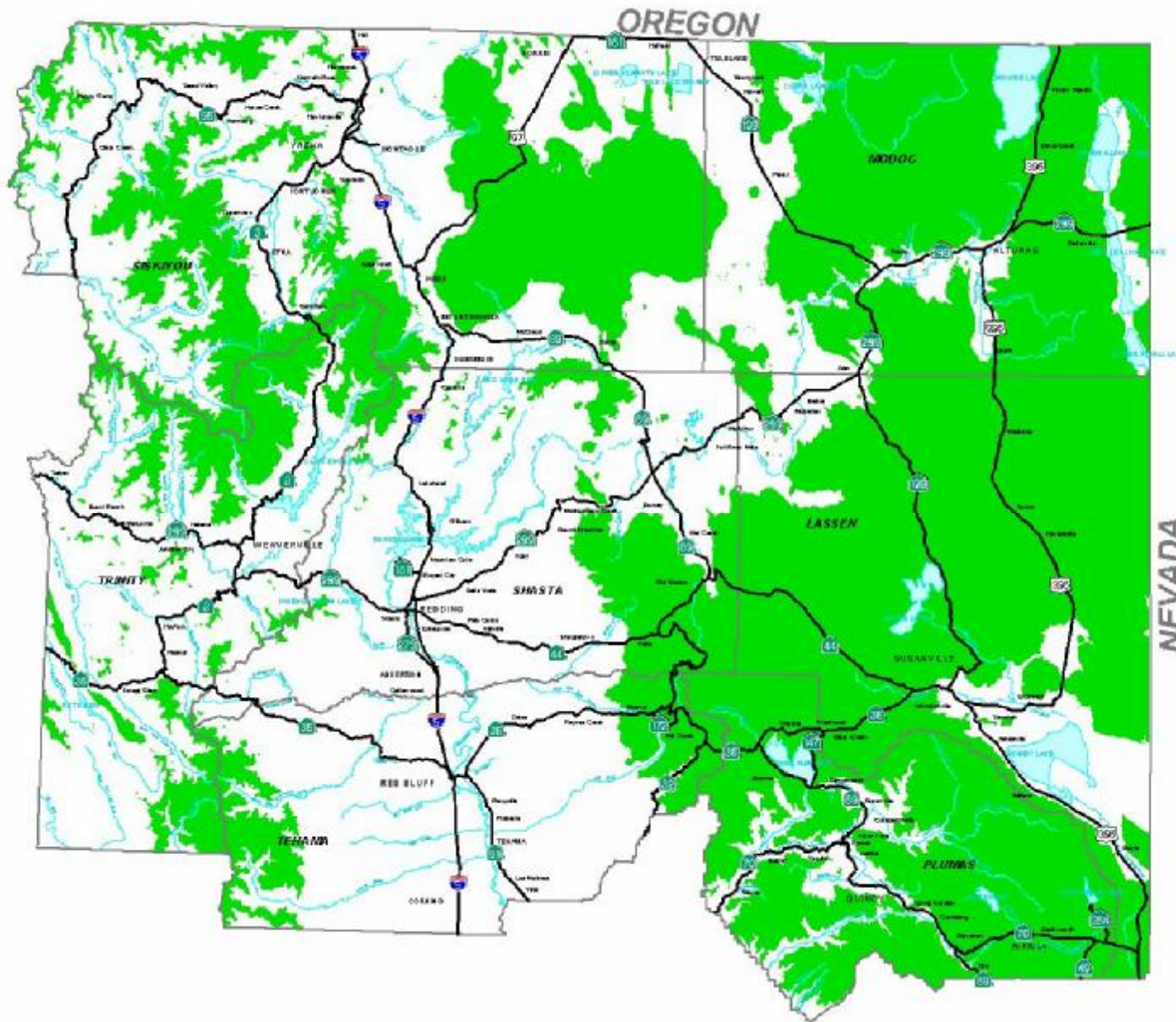
 **Elevation 1,000**



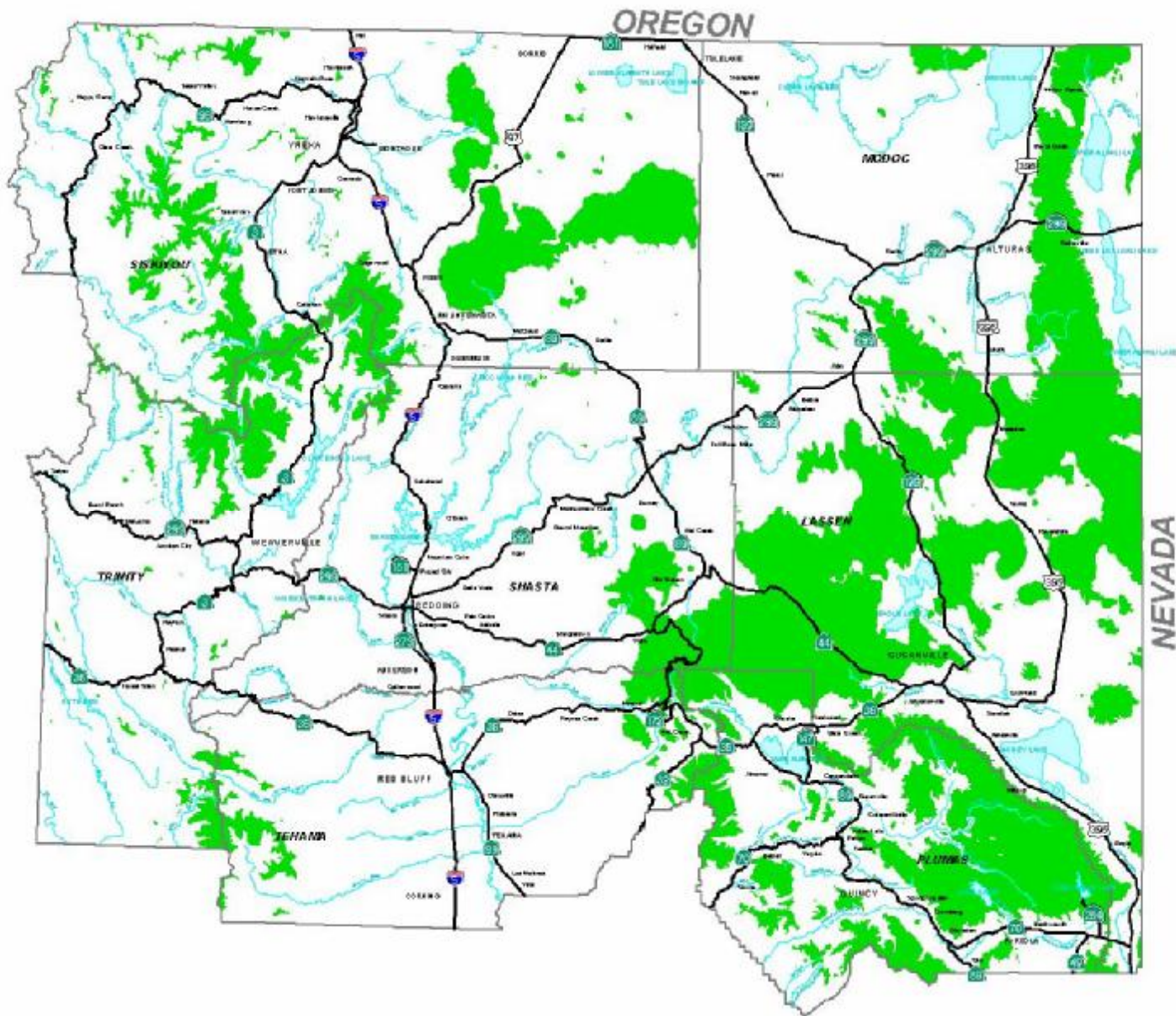
 **Elevation 2,000**



 **Elevation 4,000**



 **Elevation 5,000**

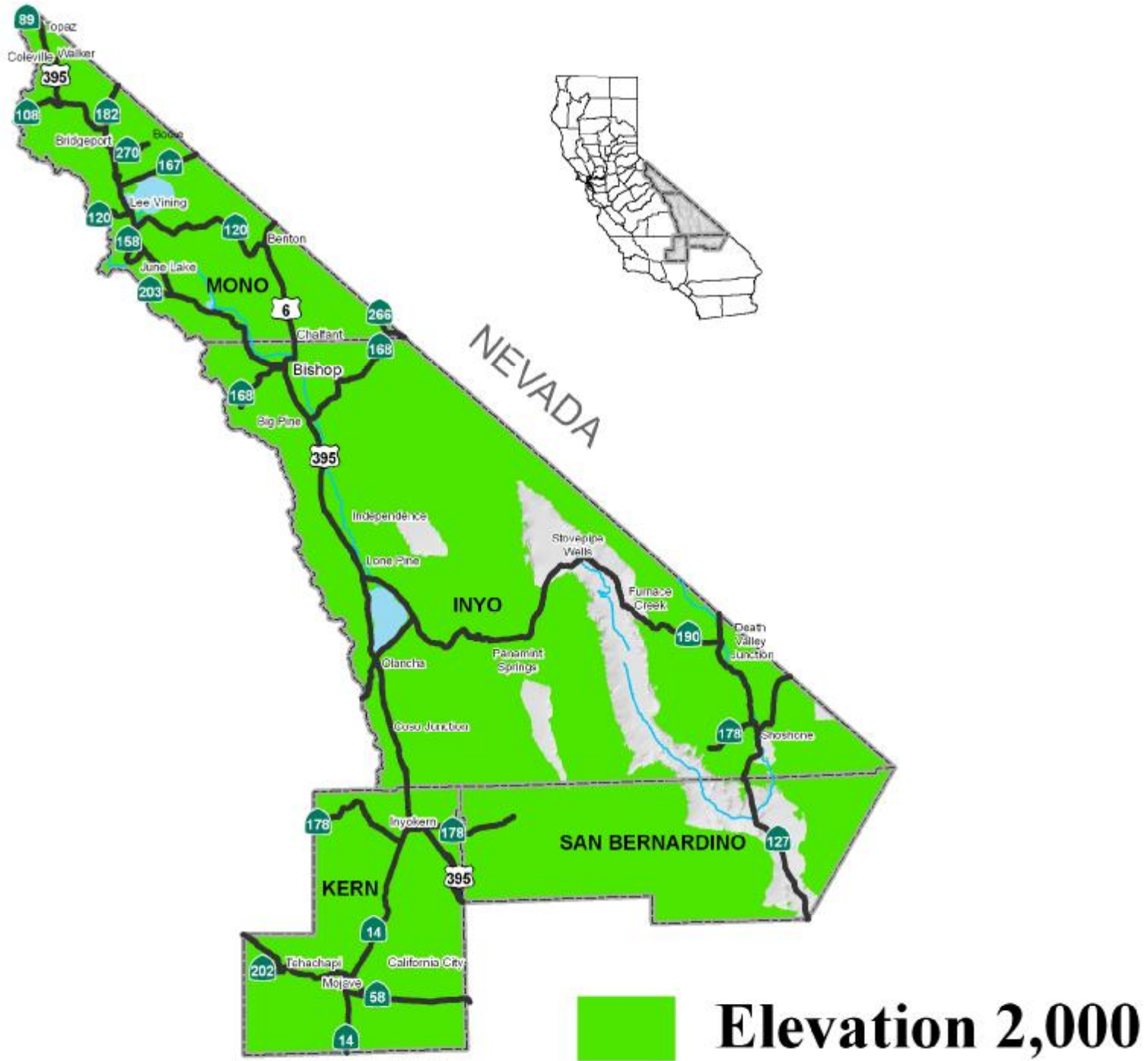


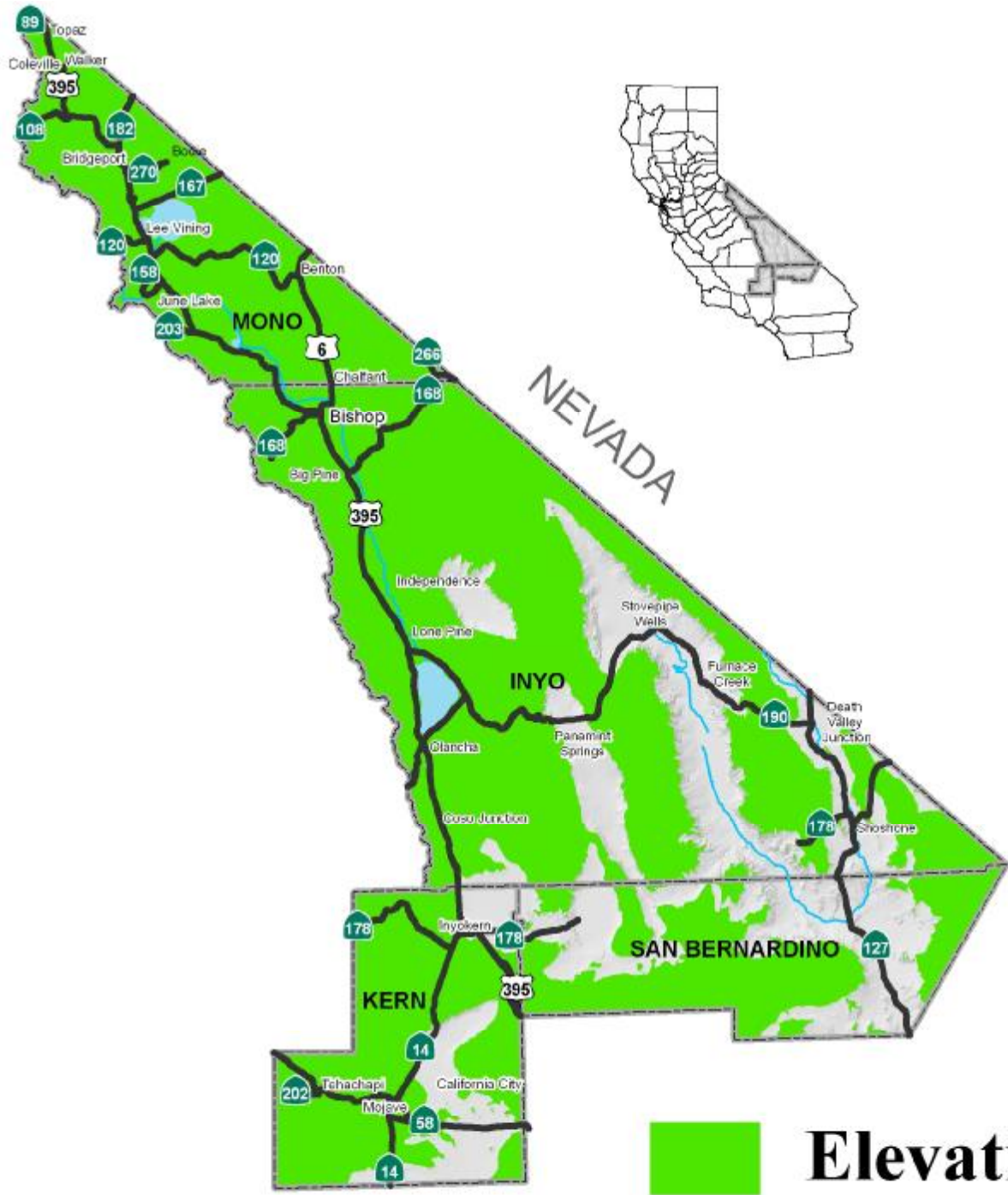
 **Elevation 6,000**



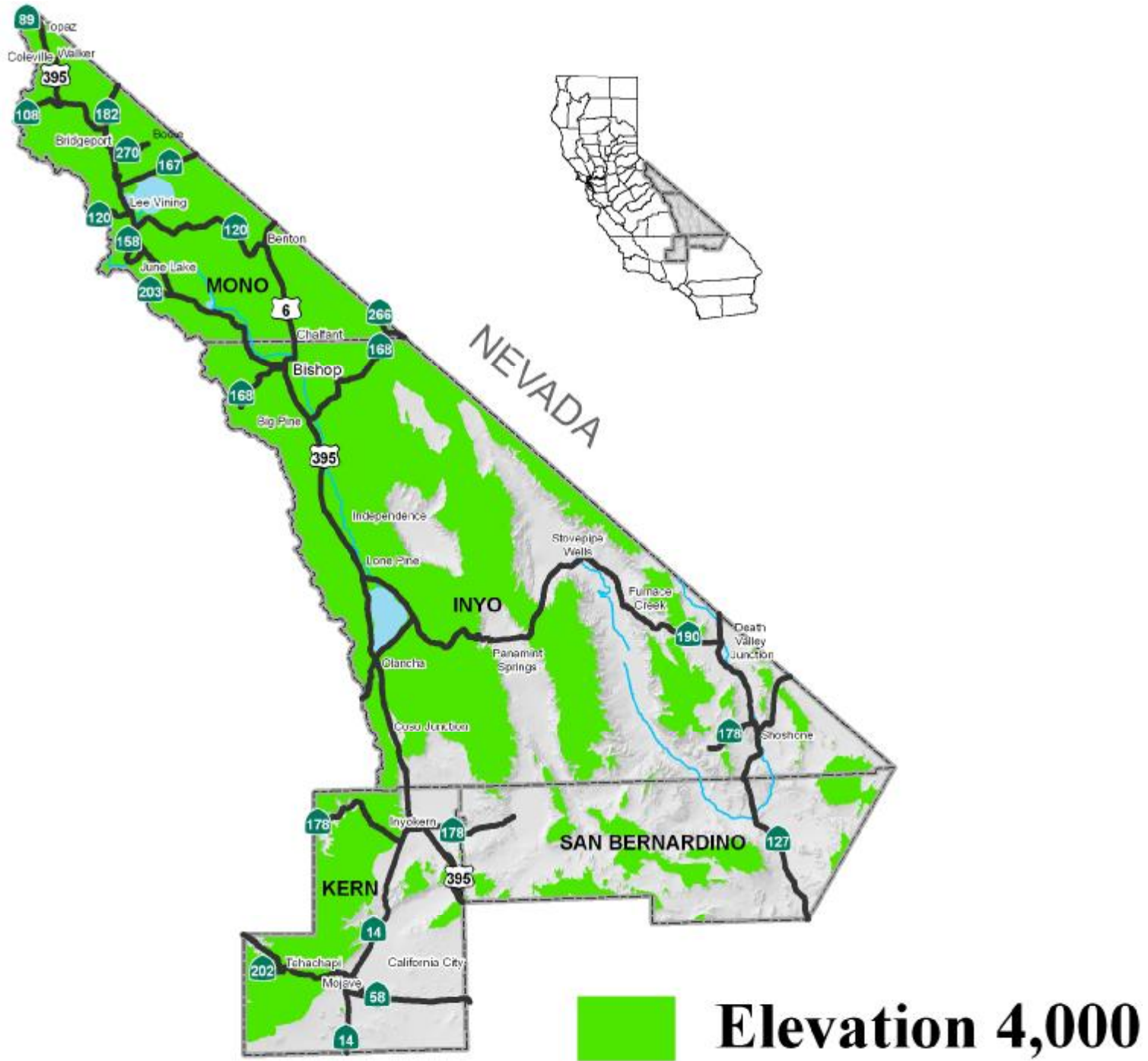
e
ft.

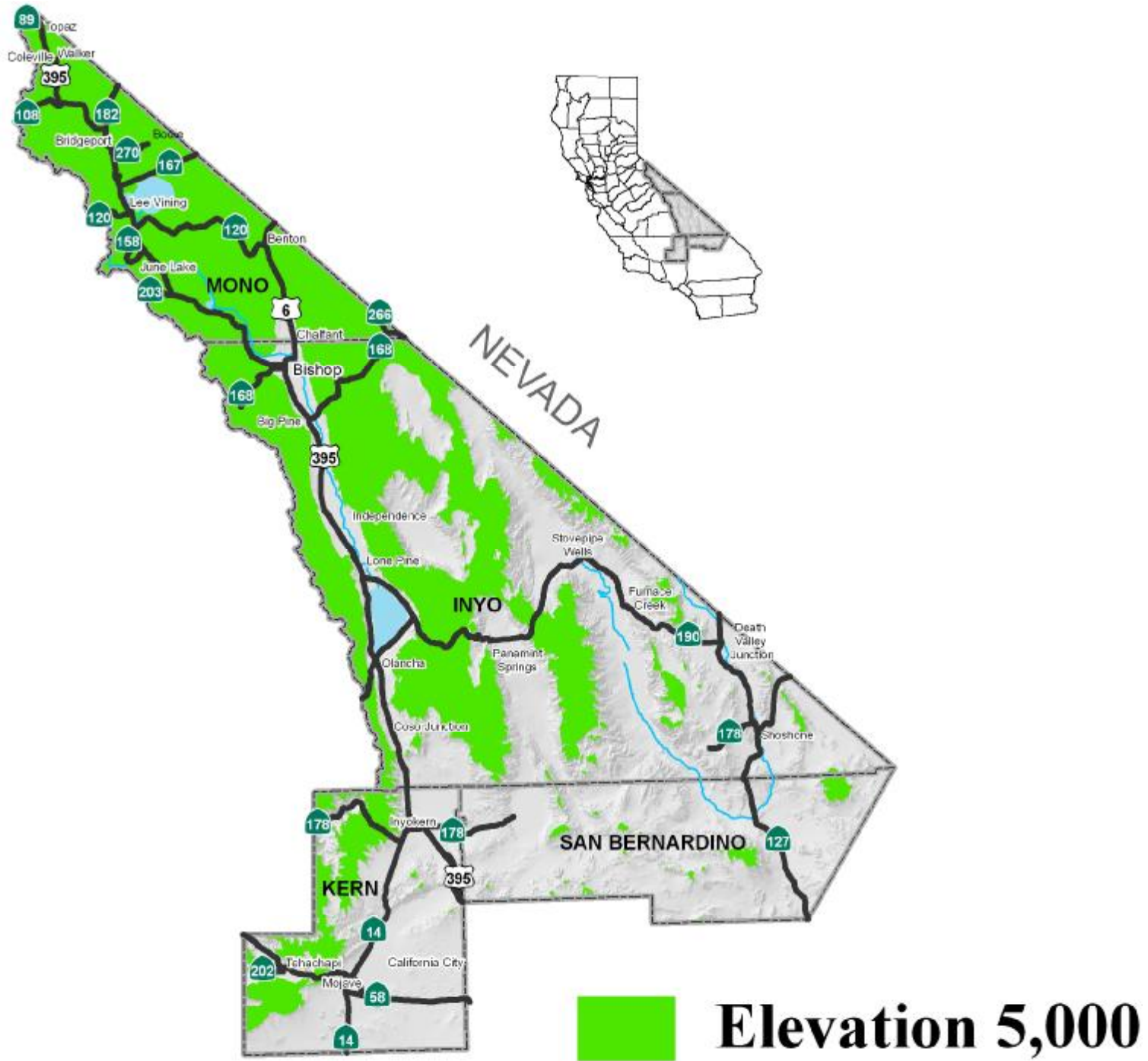
Elevation 1,000

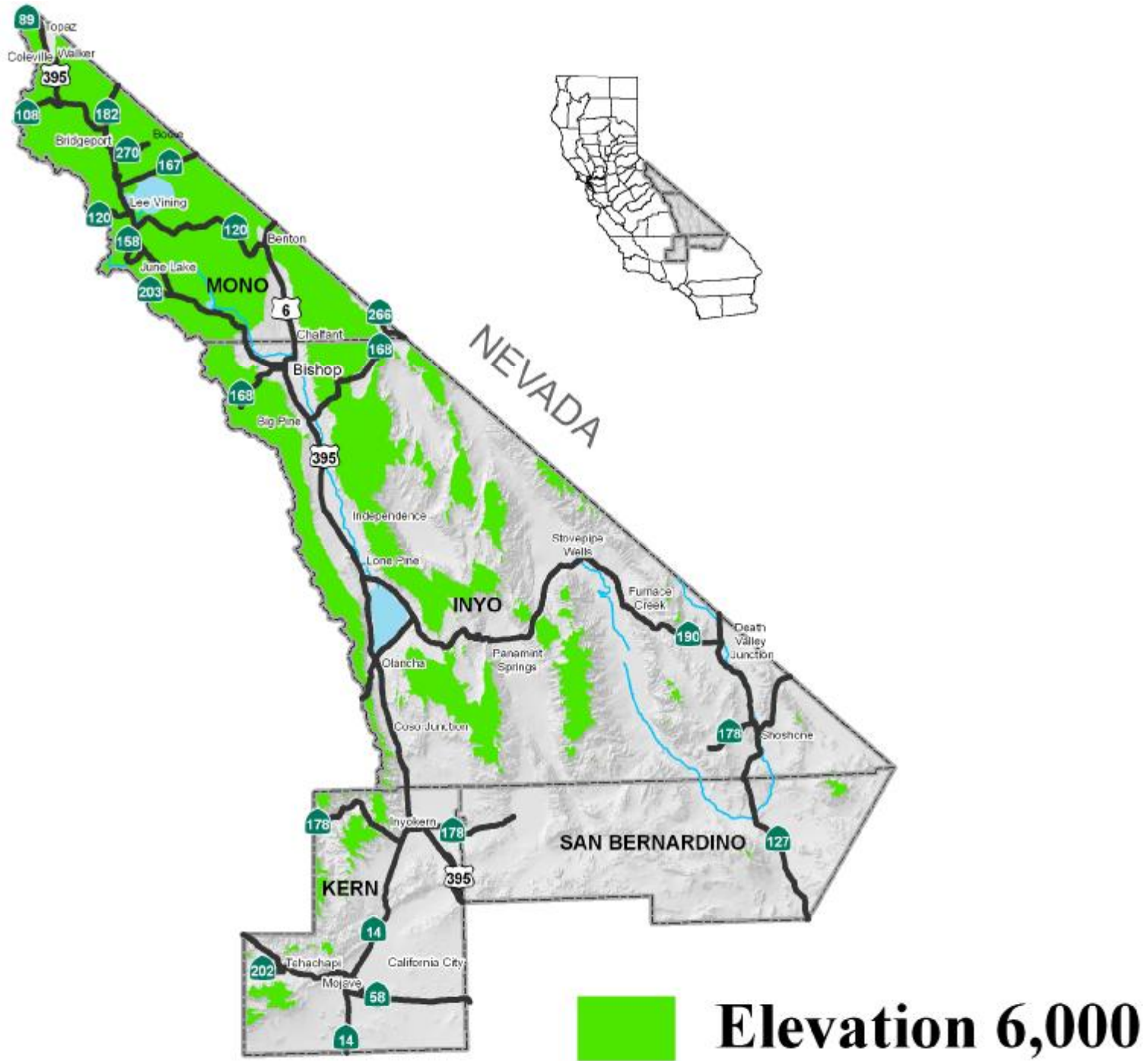


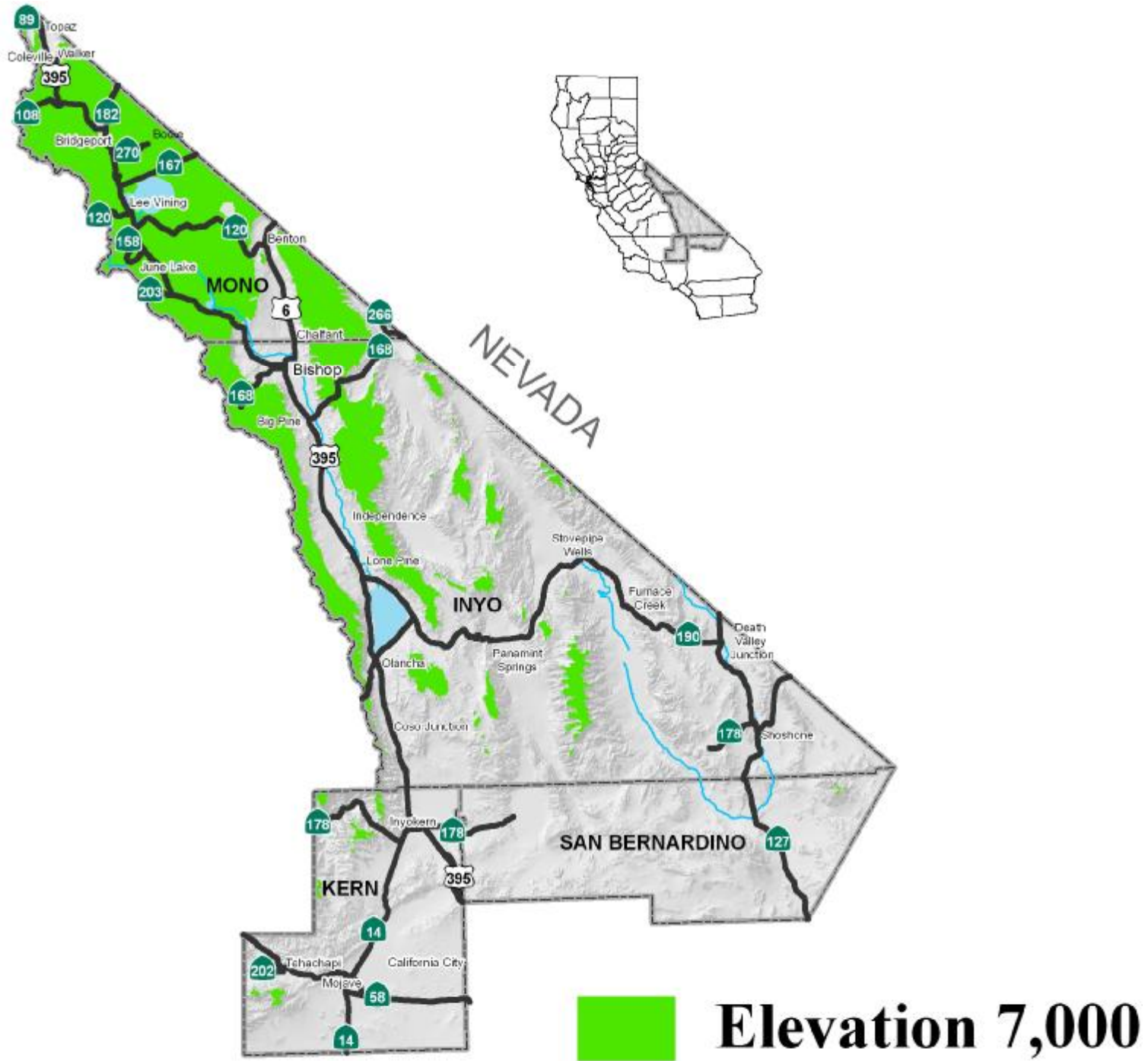


Elevation 3,000

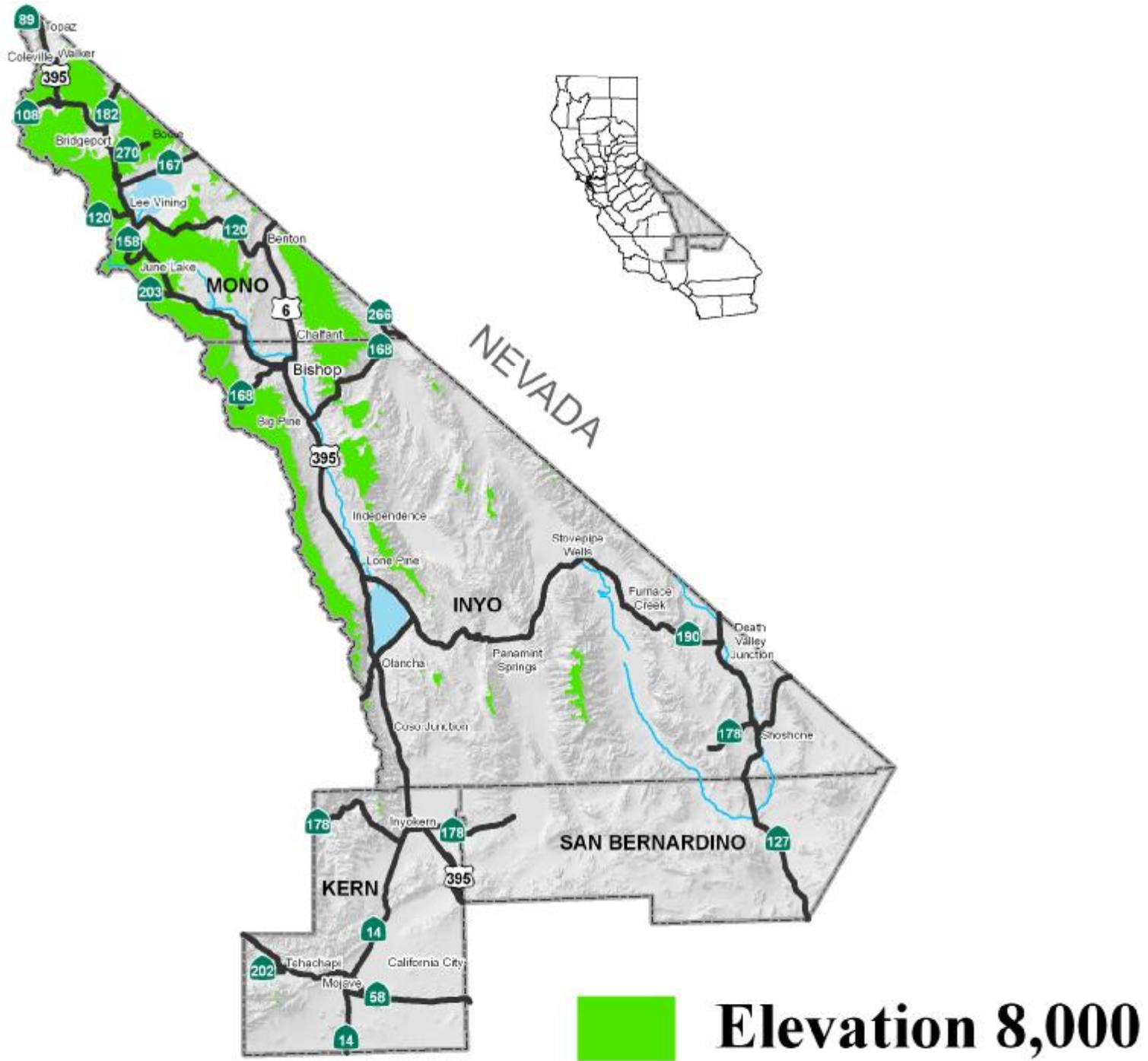


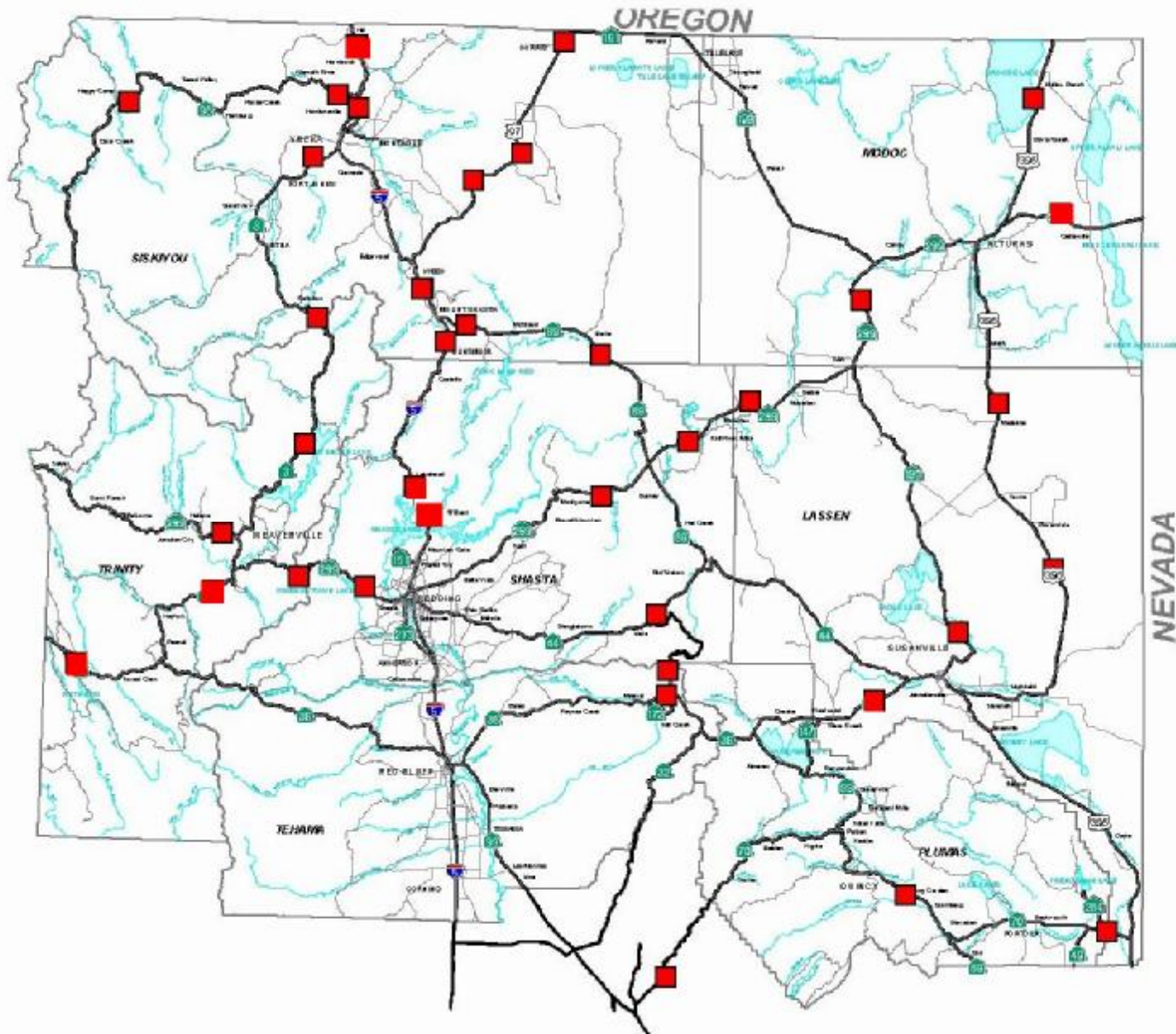




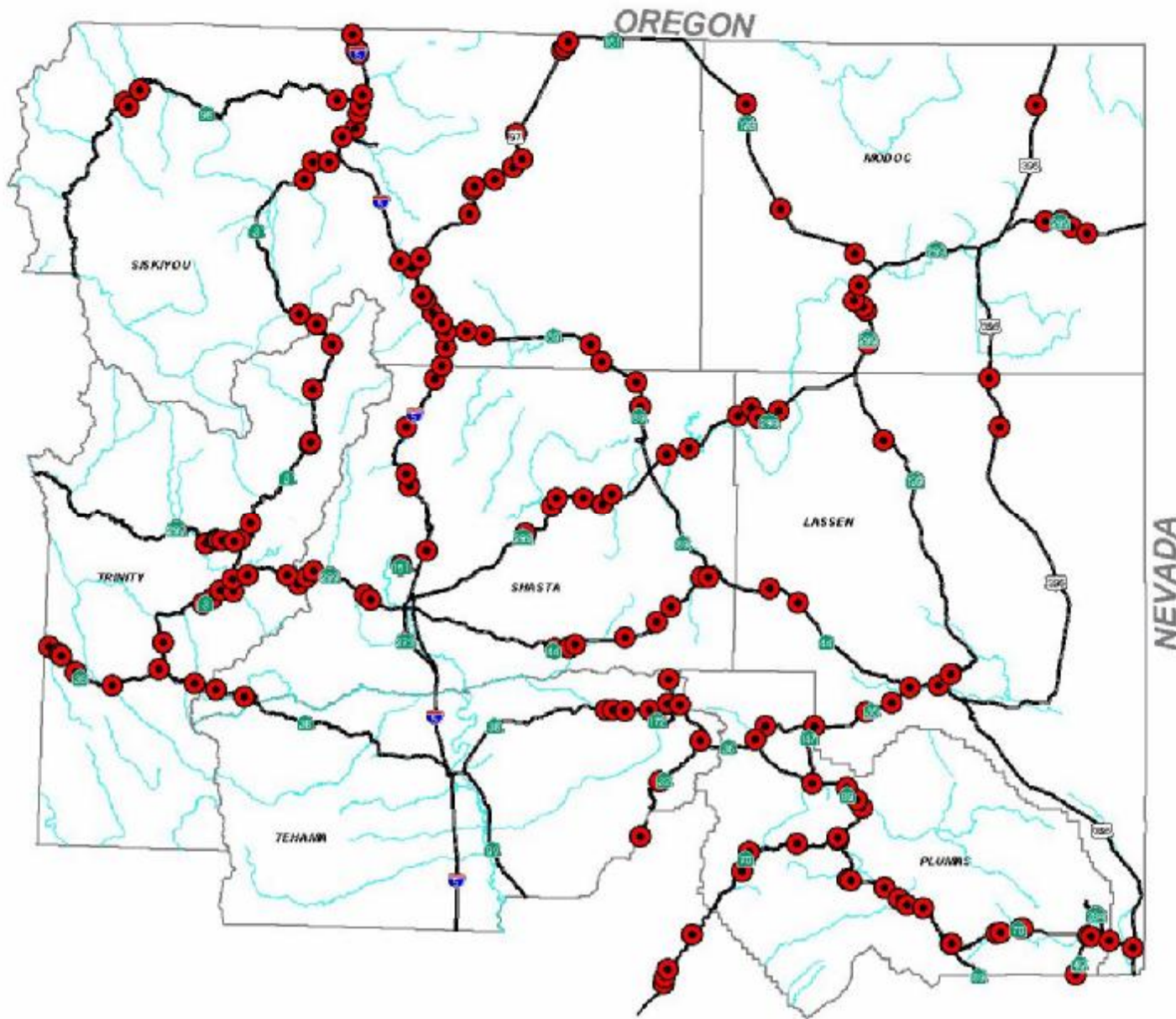


High
High





Mountain Passes



Chain Requirement Signs



ISSUES

- **Approx 10 complete I-5 closures a year due to snow**
- **Winter storms many times cause travel to take twice as long as normal.**
- **Limited traveler services**
- **Spotty cell phone coverage**
- **Moderate ITS deployment**



INTERSTATE 5

FACTS

- **100 Miles of I-5 affected by snow**
- **21,000 vehicles per day**
- **5,600 trucks per day**

Other Challenges

FIRE



More Challenges STORM DAMAGE







Still More Challenges

MAJOR INCIDENTS







December 2000
3500 Gallons of Fuel Oil in
Important and Sensitive Fishery

Rural Traveler Information

District 2

TUNE RADIO
1610 AM

Pine Grove
EXIT 1 1/2 MI

RURAL TRAVELER INFORMATION TOOLS

- In Route
- Pre Trip

Highway Advisory Radios



Changeable Message Signs



- | Advance of Decision Points
- | Advance of Major Chain Control Locations

Roadway Weather Information Systems



- | SCAN System by SSI
- | Provides weather as well as in-pavement conditions



CCTV's

- | Urbanized Corridors
(Subject to Snow)
- | Mountain Passes
- | Major Junctions in the
Valley
- | Activated “As Needed”

TMC



Pre-Trip Trav Info: CCTV

California Home

Tuesday, May 16, 2006



- Interstate 5 - North/South
- North Hill
- Hill Sandhouse
- Central Yreka
- Walters Road
- Weed Airport
- North Weed
- South Weed
- Black Butte Summit
- Abrams Lake Road
- I5/SR89
- Mott Road
- Central Dunsuir
- Vollmers
- Antlers Bridge
- Sacramento Hill
- Fawndale Road
- Pine Grove
- Central Redding
- Riverside Drive
- South Bonnyview
- Deschutes Road
- Red Bluff
- State Route 97 - North/South
- Dorris Hill
- Mt. Hebron
- Grass Lake
- State Route 89
- Snowman Hill
- State Route 299 - West/ East
- Oregon Mt. Summit
- Buckhorn Sandhouse
- Eureka Way
- SR299/SR89
- Cedar Pass
- State Route 273
- Lake Boulevard
- State Route 36 - West/ East
- Fredonier
- SR36/SR44
- Town Hill
- East Riverside
- SR36/US395
- State Route 70
- SR70/SR89
- Cedar Pass

Caltrans > District 2 > Traffic Cameras

[Add to Favorites](#)

My CA This Site

Caltrans Traffic Cameras-Northeastern California



[Closed Circuit Television Cameras](#)

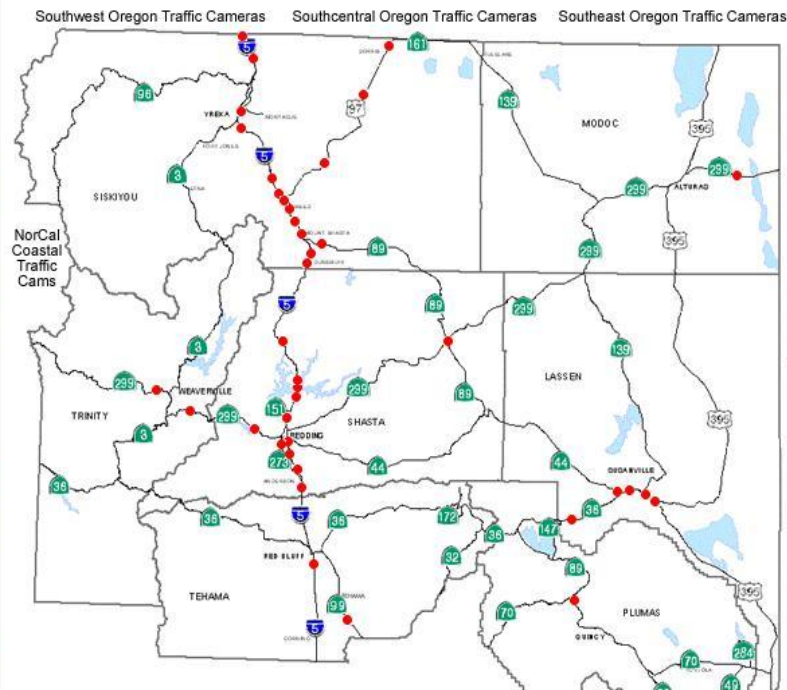


[Road Weather Information Systems](#)



[Northeastern California Chain Control Maps](#)

Northeastern California Traffic Cameras - Provided by Caltrans/District 2



District 2 - Antlers Bridge Cam is Located on South bound I5 On the West Shoulder Just Before the Bridge.

Tuesday, 16-May-2006 07:20:51 PDT



The preset value shown in the upper left hand corner of the image indicates the direction the camera is looking as follows:

- Preset 1: Looking North
- Preset 2: Looking East
- Preset 3: Looking South
- Preset 4: Looking West

NOTE: For preset values higher than 4 or if no preset value is shown, the CCTV is under command of a Transportation Management Center operator and no camera direction information can be provided.

County: Shasta
Route: 5
Postmile: 40.55
Elevation: 1055'

Please click [here](#) to view previous images.

Camera Problems? Click [here](#)

View [Live Traffic Cameras](#) in urban areas of the state...outside District 2.

District 2 - Lake Boulevard Cam is Located in Shasta County at Lake Boulevard in Redding

Tuesday, 16-May-2006 09:09:46 PDT



The preset value shown in the upper left hand corner of the image indicates the direction the camera is looking as follows:

- Preset 1: Looking North
- Preset 2: Looking East
- Preset 3: Looking South
- Preset 4: Looking West

NOTE: For preset values higher than 4 or if no preset value is shown, the CCTV is under command of a Transportation Management Center operator and no camera direction information can be provided.

County: Shasta
Route: 273
Postmile: 18.62
Elevation: 746'

Please click [here](#) to view previous images.

Camera Problems? Click [here](#)

View [Live Traffic Cameras](#) in urban areas of the state...outside District 2.

OREGON DEPARTMENT OF TRANSPORTATION



Road | Weather

Travel Center

Transportation Options

About TripCheck

Road Conditions

Weather Outlook

Cameras

Custom Cams

Map Legend

- Road cameras
- Road closed
- > 2hr delay
- 20mn-2hr delay
- < 20mn delay
- Informational
- Weather hazard
- Weather warning
- Snow zone
- Weather stations
- Construction
- Truck restrictions

Winter Travel

[Chain Law](#)

[Traction Tires](#)

[Minimum Chain Requirements](#)

[Winter Road Maintenance](#)

Related Links

[California State Traveler Info](#)

Southwest Oregon

[Save this as your Start Page?](#)

Change map: or

[View Travel Services](#)



Pre-Trip Trav Info: RWIS

California Home

Tuesday, May 16, 2006

Welcome to *California*

[Chain Control Maps](#) | [Roadside Weather Info Systems-RWIS](#) | [Closed Circuit Television](#)

Caltrans > [District 2](#) > [RWIS](#) > Antlers



Station Name: Antlers
Route: 5 County: Shasta
Location: PM 39.00, Southbound I-5 in Shasta County
Elevation: 1433'

Please click on image to view Antlers Cam page.

Mt. Shasta Area	Data Date/Time
Antlers	May 16, 2006 7:28:03 am PDT

Air

Temperature	Relative Humidity	Dew Point
69.4 F	60 %	54.8 F

Wind

AvgSpd	MaxGust
9 mph	11 mph

Precipitation

Precip	Intensity	Accum in 24hrs	Rate
		0 in	-0 iph

Interstate 5

- [Hilt](#)
- [Hornbrook](#)
- [Weed Airport](#)
- [North Weed](#)
- [Black Butte Summit](#)
- [Dunsmuir](#)
- [Vollmers](#)
- [Antlers](#)

State Route 70

[Spring Garden](#)

State Route 89

[Snowman's Summit](#)

State Route 299

[Oregon Mt. Summit](#)
[Buckhorn Sandhouse](#)

State Route 36

[Fredonver Pass Summit](#)
[Fredonver Pass East](#)

Additional Links

- [More Information About RWIS](#)
- [Chain Control Maps](#)
- [Local Traffic Cameras](#)
- [Nevada Department of Transportation - NDOT](#)
- [Oregon Department of Transportation - ODOT](#)
- [Feedback Form](#)
- [Caltrans Home](#)



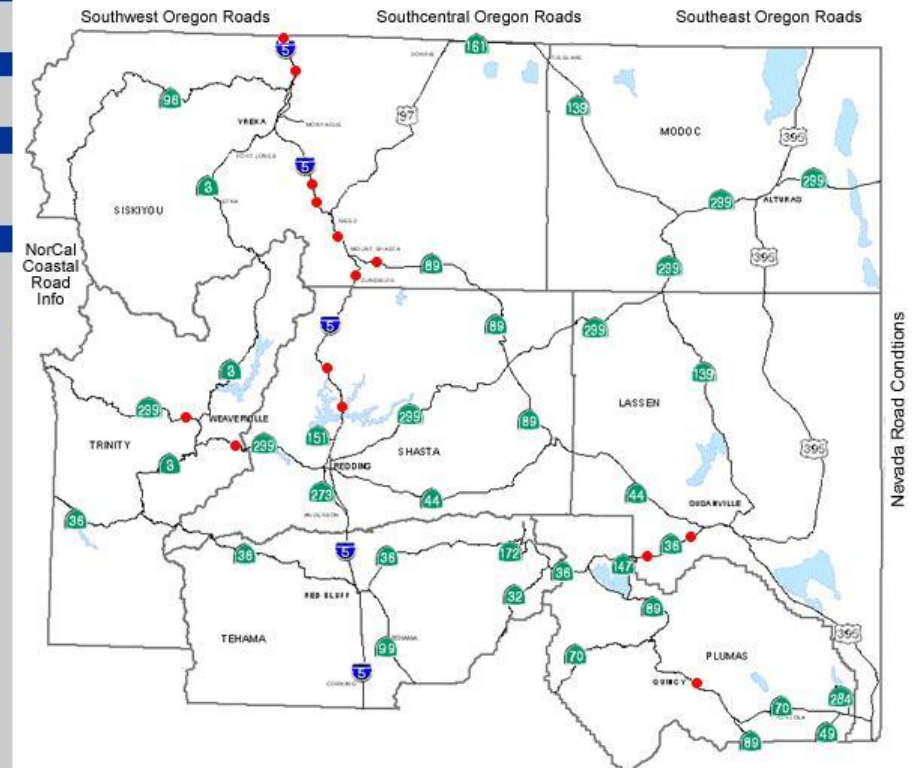
Caltrans > [District 2](#) > Roadside Weather Information Systems (RWIS)

My CA This Site

RWIS Stations - Northern California



Northern California Roadside Weather Information Systems ...more information



Nevada Road Conditions

Pre-Trip Trav Info: Chain Control

[California Home](#)

Tuesday, May 16, 2006

Welcome to *California*



[Caltrans Home](#)

[Northern California Winter Maintenance](#)

[Chain Control Maps for Counties in NorCal](#)

[All Counties](#)

[Lassen](#)

[Modoc](#)

[Plumas](#)

[Shasta](#)

[Siskiyou](#)

[Tehama](#)

[Trinity](#)

[Chain Chart \(pdf\)](#)

Add to Favorites

Attention:
Information on the maps is updated only during regular business hours and during major snow events. Please check date/time stamp on map.



[Caltrans](#) > [District 2](#) > [Traveler Information](#) > [Chain Control](#) > [NorCal](#)

Chain Control Map - Northern California

My CA This Site



[Closed Circuit Television Cameras](#)



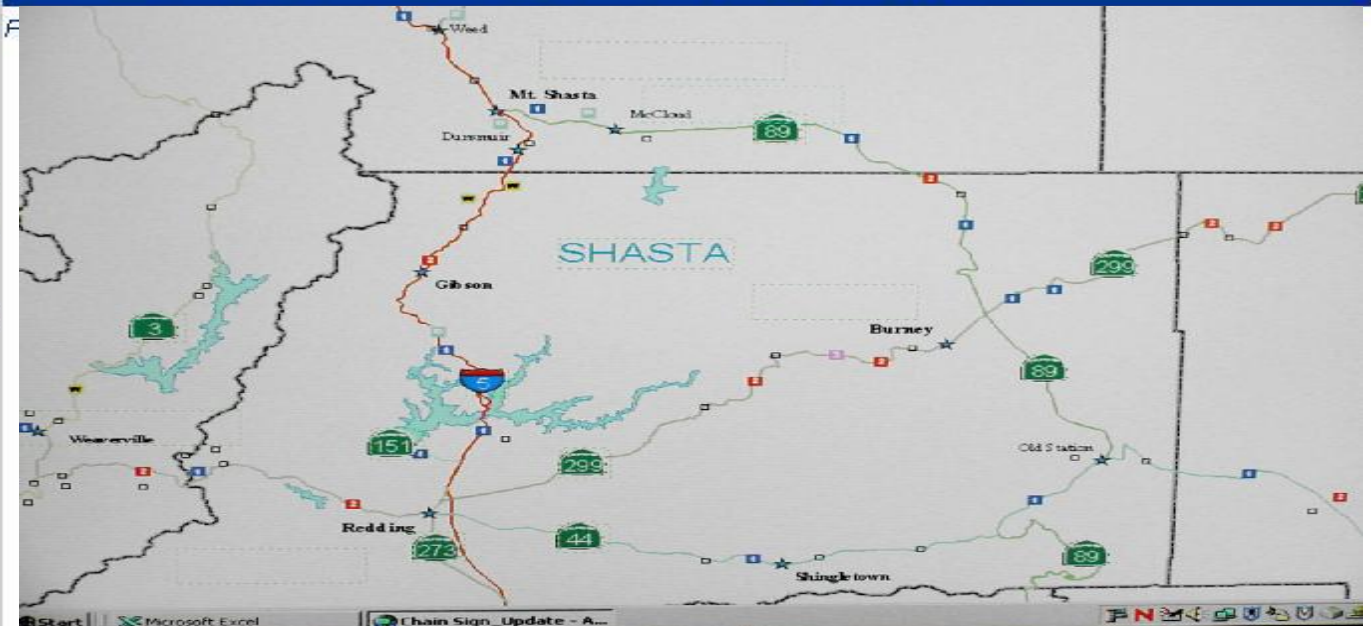
[Road Weather Information Systems](#)



[Northern California Chain Control Maps](#)

Chain Control Legend

W		R-1M		R-1		R-2		R-3		Road		Truck		Truck		Vehicle		Metering		
										Closed	Hold	Screen	Screen							Traffic



***Big Piece of the RURAL Pre-Trip
& In Route Traveler Information
Puzzle***

